

# Sludge Lancing

npe®

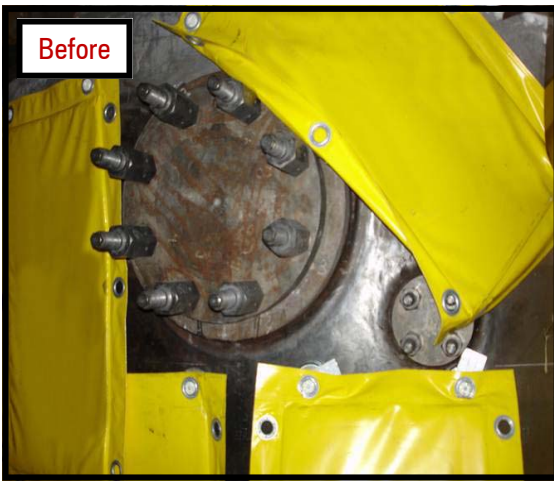
A BRAND OF  
EICHROM TECHNOLOGIES



Sludge accumulates on the secondary side of steam generators and must be removed to prevent pitting, intergranular stress corrosion cracking and other forms of tube degradation.

During the sludge lancing process, work is performed using the highly radioactive hand holes, and workers spend a significant amount of time in close proximity to the generator's outer surface. NPO customized a shielding solution to minimize dose during this application.

magnetic  
lead wool  
panels



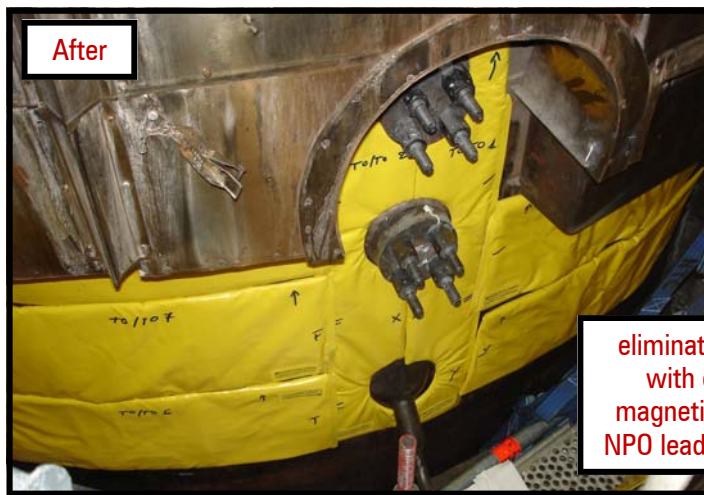
Before



Before



After



After

eliminated streaming  
with custom-fit,  
magnetically-secured  
NPO lead shield panels.

## Magnetic Lead Wool Blankets

Custom fit to any plant's steam generators, these magnetically secured lead wool panels provide shielding between the worker and the side of the steam generator. The magnetism of these blankets allow for quick installation on any carbon steel surface while offering a significant dose reduction.

- No streaming
- No interference with workers (unlike hanging scaffolding for lead blankets)
- Quick installation